

technical specifications

Ciudad de la Luz

- ① **backlot 1**
- ② **backlot 2**
- ③ **pit**
- ④ **production support building 1**
- ⑤ **production support building 2**
- ⑥ **production support building 3**
- ⑦ **film set 1**
- ⑧ **film set 2**
- ⑨ **film set 3**
- ⑩ **film set 4**
- ⑪ **film set 5**
- ⑫ **film set 6**
- ⑬ **workshop/warehouse**
- ⑭ **attic**



backlot 1

general information

- Built-up area: 495.139,88 sq ft.
- Usable area: 456.034,59 sq ft.
- Perimeter fencing of simple torsion:
 - 2 vehicle accesses.
 - 2 pedestrian access stairways from the storage loft.

soil layers

- Compacted slab.

acoustics

- There is no isolation.

climate control

- There is no air conditioning.

dumping

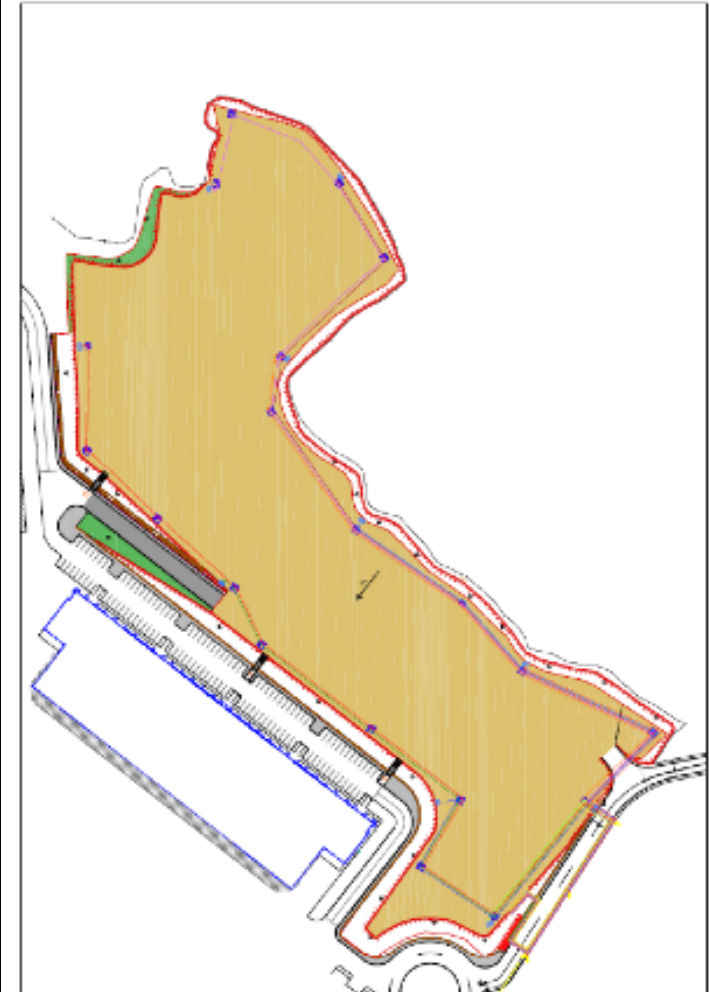
- Waste water connection by means of a 11,81 in corrugated PVC pipe.
- The manhole as well as the casket are located in the south-east of the plot.
- Rainwater drainage by means of perimeter longitudinal scuppers with metal tramex grating.

electricity

- Total power: 2 x 2.000 KVA.
- Location of switchboards:
 - Perimeter with 14 switchboards with 5 single-pole 400A camlock-type sockets (neutral, 3 phases and earth).
- Fibre fibre cables.

other services

- Optical fibre: Location of 14 terminal boxes distributed around the perimeter. Each terminal box contains 8 single-mode optical fibres and 2xUTP cat 6 2x4x0.58.
- Sanitary cold water: 14 Barcelona water intakes.



backlot 2

general information

- Built-up area: 809.941,23 sq ft.
- Usable area: 809.941,23 sq ft.
- Galvanised steel wire fencing with green plastic-coated polyester finish and 60x60 square tubular posts of 0,039 in.
- Vehicle access.

soil layers

- Compacted slab.

acoustics

- There is no isolation.

climate control

- There is no air conditioning.

dumping

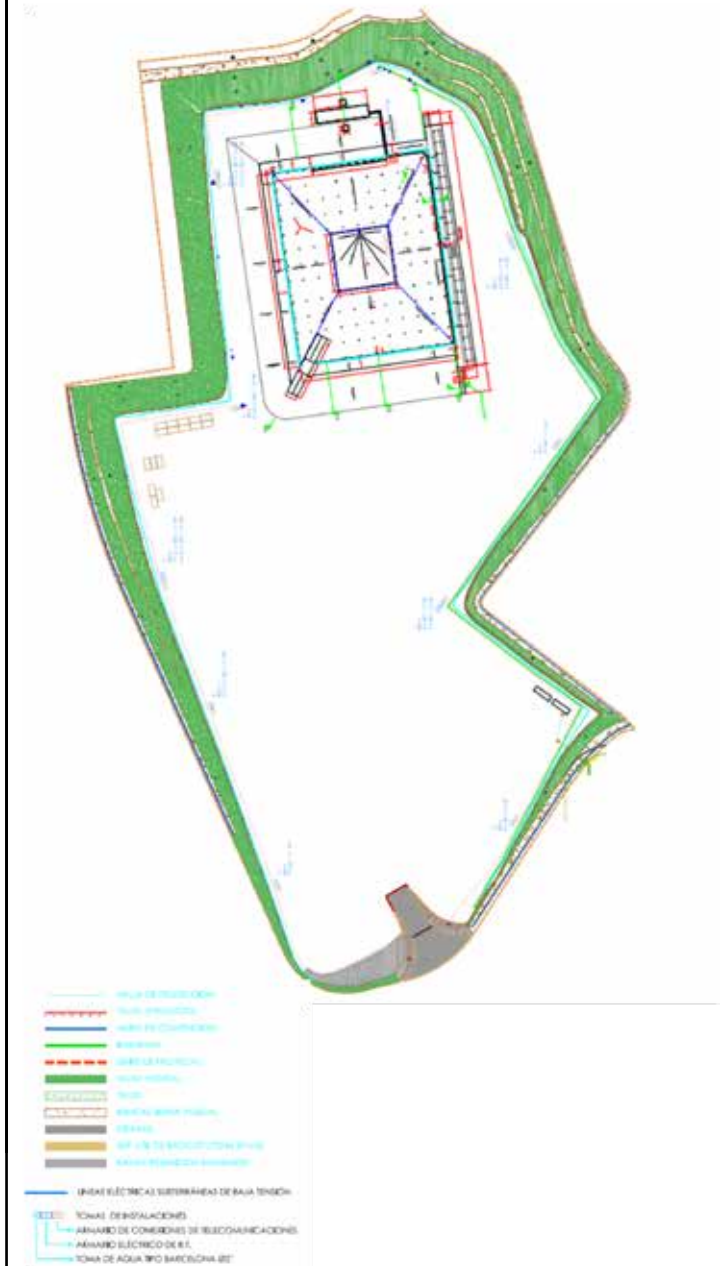
- Waste water connection by means of a 11,81 in corrugated PVC pipe.
- The manhole as well as the casket are located in the south-east of the plot.
- Rainwater drainage by means of perimeter longitudinal scuppers with metal tramex grating.

electricity

- Total power: 2 x 2.000 KVA.
- Location of switchboards:
 - Perimeter with 14 switchboards with 5 single-pole 400A camlock-type sockets (neutral, 3 phases and earth).
- Fibre fibre cables.

other services

- Optical fibre: Location of 14 terminal boxes distributed around the perimeter. Each terminal box contains 8 single-mode optical fibres and 2xUTP cat 6 2x4x0.58.
- Sanitary cold water: 14 Barcelona water intakes.



general information

- Tank: 328,08 x 262,47 ft and 3,94 ft depth.
- Internal pit: 98,43 x 98,43 ft and 13,12 ft deep.
- Maximum depth: 17,06 ft.

sill

- Formed by HA-30 concrete slab.
- Thickness: 0,98 ft.

walls and parapets

- 3 perimeter walls and the one parallel to the greenscreen with spillway function.
- Construction up to +6,89 ft in reinforced concrete, and 19,69 ft wide access ramp to the interior.

wave chambers and trellis

- Set of modular chambers 11,81 ft long and 3,94 ft wide, connected at the bottom.
- Turbine-driven air-generated wave flow.
- 0.6% slope over the floor to drain into a recirculation tank.

center pit

Horizontal slab and embedded walls of HA-30 concrete, with a lower watertight manhole.

backing blue screen

- 39,37 ft high and 393,71 ft long.
- It serves as a material support for a coloured fabric like Digiconp Blue or similar for the projection function.

hydraulic networks

- For water supply and drainage
- Water is supplied by pipes from a pumping house located on the beach.
- Drainage is by means of slotted PVC pipe lines.

other services

- Equipped with: water slides, canyons and wave generation.
- Overflow on the south face and partially on the east face.
- Possibility of building decorations around it.



production support building 1

general information

- Built-up area: 37.692,95 sq ft divided into 3 floors.
 - Ground floor: 12.466,76 sq ft.
 - First floor: 12.548,46 sq ft.
 - Second floor: 12.677,73 sq ft.
- Lift between the 3 floors and a lift between the ground and first floors.
- Direct access to the sets from the first floor level.
- Each floor is symmetrical and the facilities are double separated, with independent access to each set.

functional distribution

- Ground floor: toilets, cloakroom, cleaning, laundry, plumbing, telecommunications, storerooms and multi-purpose rooms.
- First floor: dressing rooms, multi-purpose rooms, toilets, waiting rooms, cleaning, electricity and telecommunications.
- Second floor: offices, multi-purpose rooms, meeting rooms, toilets, cleaning, electricity and telecommunications.

floor coatings

- Marble and vinyl flooring.

climate control

- Air conditioning and heating.

dressing rooms

- Access is via the first floor entrances, by lift and also by freight elevator. They have direct access to the film sets.
- Equipped with kitchens, bathrooms and independent hairdressing and make-up area.

electricity

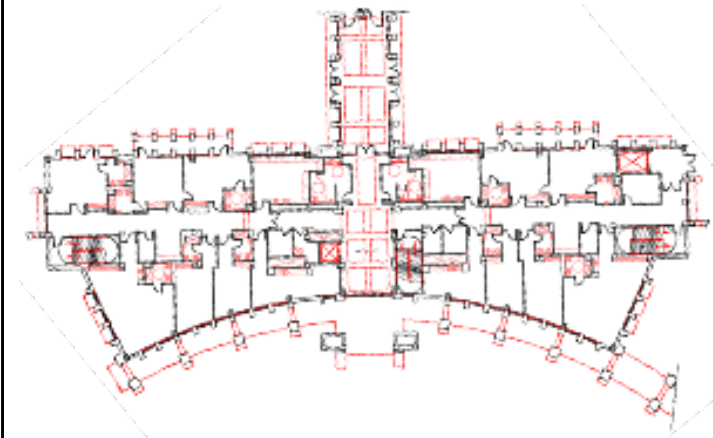
- 400 kVA MV/LV transformer.
- UPS in telecommunications rooms.
- Generator set for the whole building.

other services

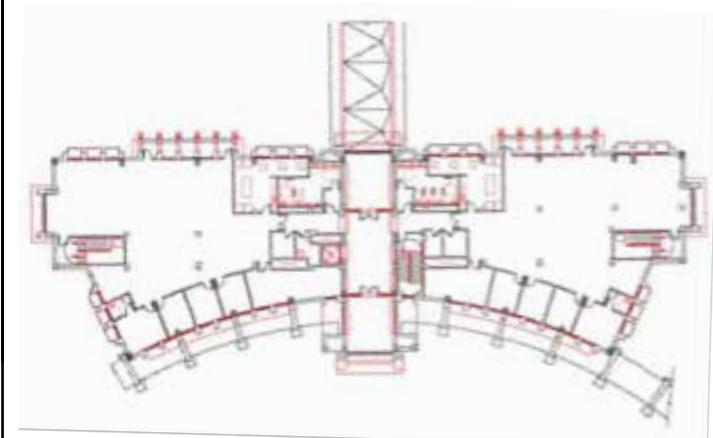
- Fibre optic connection between buildings and sets.
- Wired network and Wi-Fi throughout the building, as well as IP telephony access.
- Meeting and videoconferencing rooms on floor 2.



ground floor



first floor



second floor

production support building 2

technical specifications

general information

- Built-up area: 37.692,95 sq ft divided into 3 floors.
 - Ground floor: 12.466,76 sq ft.
 - First floor: 12.548,46 sq ft.
 - Second floor: 12.677,73 sq ft.
- Lift between the 3 floors and a lift between the ground and first floors.
- Direct access to the sets from the first floor level.
- Each floor is symmetrical and the facilities are double separated, with independent access to each set.

functional distribution

- Ground floor: toilets, cloakroom, cleaning, laundry, plumbing, telecommunications, storerooms and multi-purpose rooms and projection room.
- First floor: dressing rooms, multi-purpose rooms, toilets, waiting rooms, cleaning, electricity and telecommunications.
- Second floor: offices, multi-purpose rooms, meeting rooms, toilets, cleaning, electricity and telecommunications.

floor coatings

- Marble and vinyl flooring.

climate control

- Air conditioning and heating.

dressing rooms

- Access is via the first floor entrances, by lift and also by freight elevator. They have direct access to the film sets.
- Equipped with kitchens, bathrooms and independent hairdressing and make-up area.

electricity

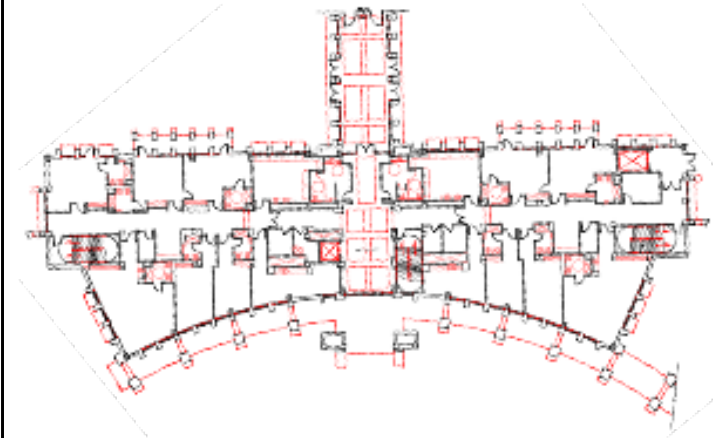
- 400 kVA MV/LV transformer.
- UPS in telecommunications rooms.
- Generator set for the whole building.

other services

- Fibre optic connection between buildings and sets.
- Wired network and Wi-Fi throughout the building, as well as IP telephony access.
- Meeting and videoconferencing rooms on floor 2.



ground floor



first floor



second floor

production support building 3

technical specifications

general information

- Built-up area: 37.692,95 sq ft divided into 3 floors.
 - Ground floor: 12.466,76 sq ft.
 - First floor: 12.548,46 sq ft.
 - Second floor: 12.677,73 sq ft.
- Lift between the 3 floors and a lift between the ground and first floors.
- Direct access to the sets from the first floor level.
- Each floor is symmetrical and the facilities are double separated, with independent access to each set.

functional distribution

- Ground floor: toilets, cloakroom, cleaning, laundry, plumbing, telecommunications, storerooms and multi-purpose rooms.
- First floor: dressing rooms, multi-purpose rooms, toilets, waiting rooms, cleaning, electricity and telecommunications.
- Second floor: offices, multi-purpose rooms, meeting rooms, toilets, cleaning, electricity and telecommunications.

floor coatings

- Marble and vinyl flooring.

climate control

- Air conditioning and heating.

dressing rooms

- Access is via the first floor entrances, by lift and also by freight elevator. They have direct access to the film sets.
- Equipped with kitchens, bathrooms and independent hairdressing and make-up area.

electricity

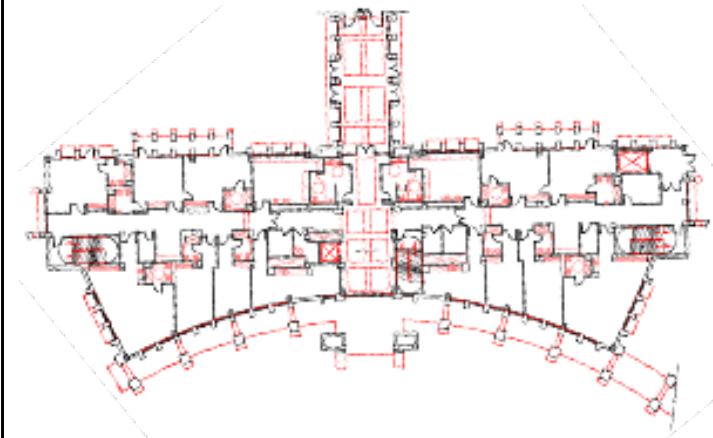
- 400 kVA MV/LV transformer.
- UPS in telecommunications rooms.
- Generator set for the whole building.

other services

- Fibre optic connection between buildings and sets.
- Wired network and Wi-Fi throughout the building, as well as IP telephony access.
- Meeting and videoconferencing rooms on floor 2.



ground floor



first floor



second floor

film set 1

general information

- Built-up area: 17.437,53 sq ft.
- Useful surface area: 13.594,82 sq ft.
- Free height: 41,01 ft.

soil layers

- 1,18 in phenolic resin plywood board.
- 0,75 in water-repellent MDF board.
- 0,39 in non-slip phenolic board on both sides.
- Sand filler between 3,15 x 1,61 in wooden battens.
- Reinforced 7,87 in screed + 9,84 in of gravel.
- Maximum load: 2.84 psi.
- Maximum nailing depth: 1,97 in.

acoustics

- Airborne sound insulation: 50 dB.

climate control

- AA in sets: Electrical power 400 kw.
- Heating by means of portable fan heaters (Power: 15kw/unit). Request to SPTD Technical Dept.

dumping

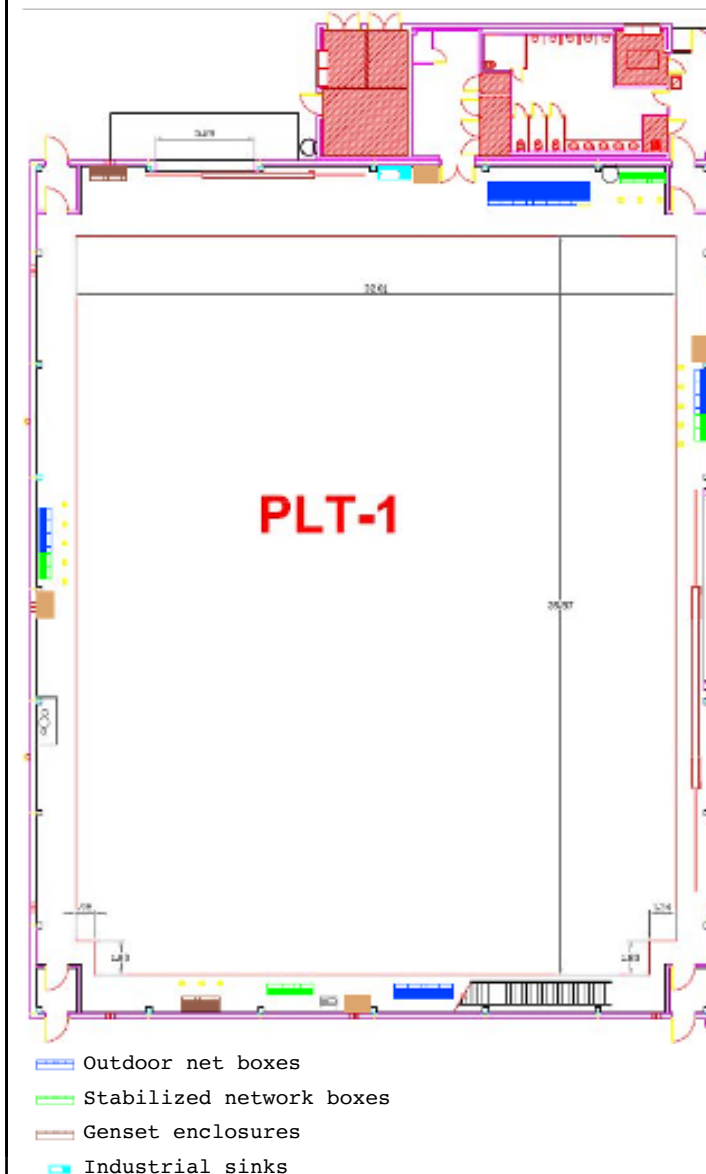
- Industrial sinks (see plan): Suitable for cleaning paint utensils, not for dumping paint.
- Waste management and dumping: Contact the Services Dept.

electricity

- Total power: 1.250 KVA.
- Location of switchboards at N. low and N. gangway.
- Board colour code:
 - **BLUE**: Direct supply from external network.
 - **GREEN**: Stabilised supply through UPS (300 KVA; 30 min).
 - **BROWN**: Supply via external external generator.
- Electrical outlets:
 - Single-phase: Schuko, Cetac.
 - Three-phase: Cetac 16, 32 and 63 A, Marechal 125A and Spot lock 400A.

other services

- Compressed air: 4 ¾" and 16 ½" quick taps.
- Drinking water: 2 sink taps, 2 spillway taps.
- 4 smoke extractors for special effects, 882.866,67 ft³/h u.
- Hoists on beams.
 - 7 beams.
 - 3 hoists per beam.
 - Max. load beam 6.613,87 lb.
 - Max. load hoist 2.204,62 lb.
- Wooden comb: Max. load 1,42 psi. Max. point load 1.488,12 lb.
- Coaxial audio-visual cabling network to the support building room.
- Junction box: 5 ground level, 3 gangway level.
 - 5 LEMO connectors.
 - 20 BNC connectors.
 - 36 XLR connectors.
- On-stage patch cabinet.
- Technical room with wiring racks.



film set 2

general information

- Built-up area: 17.437,53 sq ft.
- Useful surface area: 13.594,82 sq ft.
- Free height: 41,01 ft.

soil layers

- 1,18 in phenolic resin plywood board.
- 0,75 in water-repellent MDF board.
- 0,39 in non-slip phenolic board on both sides.
- Sand filler between 3,15 x 1,61 in wooden battens.
- Reinforced 7,87 in screed + 9,84 in of gravel.
- Maximum load: 2.84 psi.
- Maximum nailing depth: 1,97 in.

acoustics

- Airborne sound insulation: 50 dB.

climate control

- AA in sets: Electrical power 400 kw.
- Heating by means of portable fan heaters (Power: 15kw/unit). Request to SPTD Technical Dept.

dumping

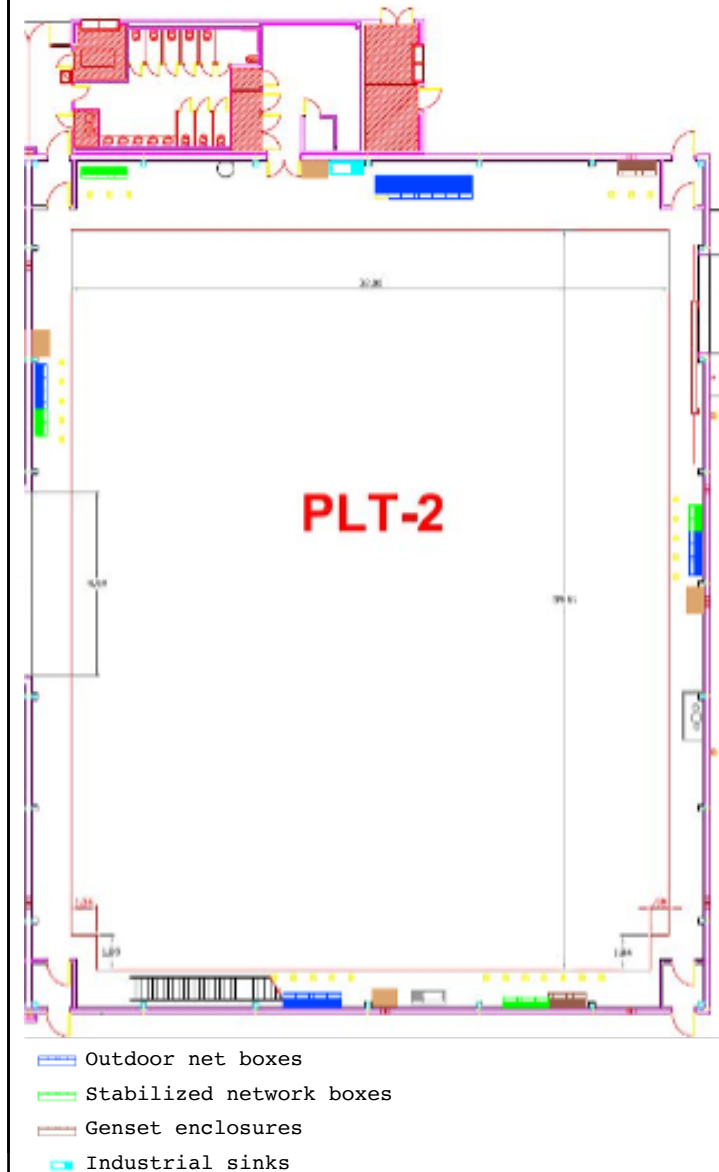
- Industrial sinks (see plan): Suitable for cleaning paint utensils, not for dumping paint.
- Waste management and dumping: Contact the Services Dept.

electricity

- Total power: 1.250 KVA.
- Location of switchboards at N. low and N. gangway.
- Board colour code:
 - **BLUE**: Direct supply from external network.
 - **GREEN**: Stabilised supply through UPS (300 KVA; 30 min).
 - **BROWN**: Supply via external external generator.
- Electrical outlets:
 - Single-phase: Schuko, Cetac.
 - Three-phase: Cetac 16, 32 and 63 A, Marechal 125A and Spot lock 400A.

other services

- Compressed air: 4 ¾" and 16 ½" quick taps.
- Drinking water: 2 sink taps, 2 spillway taps.
- 4 smoke extractors for special effects, 882.866,67 ft³/h u.
- Hoists on beams.
 - 7 beams.
 - 3 hoists per beam.
 - Max. load beam 6.613,87 lb.
 - Max. load hoist 2.204,62 lb.
- Wooden comb: Max. load 1.42 psi. Max. point load 1488,12 lb.
- Coaxial audio-visual cabling network to the support building room.
- Junction box: 5 ground level, 3 gangway level.
 - 5 LEMO connectors.
 - 20 BNC connectors.
 - 36 XLR connectors.
- On-stage patch cabinet.
- Technical room with wiring racks.



film set 3

technical specifications

general information

- Built-up area: 25.187,55 sq ft.
- Useful surface area: 19.310,46 sq ft.
- Free height: 49,21 ft.
- Flood pit 32,81 x 32,81 x 9,84 ft.
 - Filling time: 9 h.
 - Emptying: 3 h (by pump).

soil layers

- 1,18 in phenolic resin plywood board.
- 0,75 in water-repellent MDF board.
- 0,39 in non-slip phenolic board on both sides.
- Sand filler between 3,15 x 1,61 in wooden battens.
- Reinforced 7,87 in screed + 9,84 in of gravel.
- Maximum load: 2,84 psi.
- Maximum nailing depth: 1,97 in.

acoustics

- Airborne sound insulation: 50 dB.

climate control

- AA in sets: Electrical power 400 kw.
- Heating by means of portable fan heaters (Power: 15kw/unit). Request to SPTD Technical Dept.

dumping

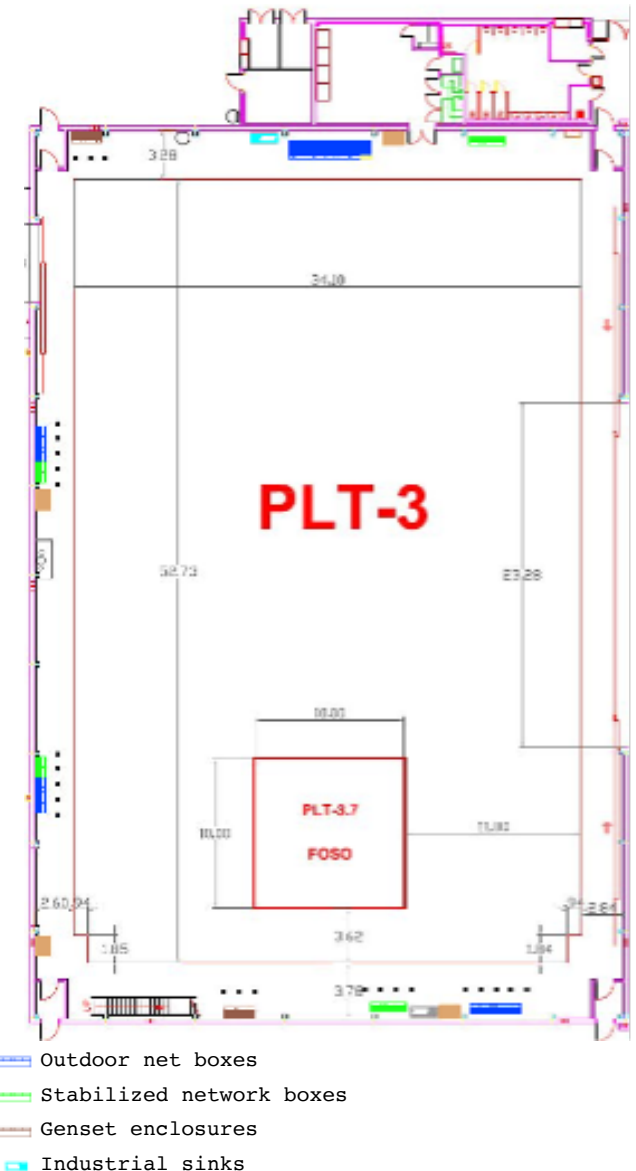
- Industrial sinks (see plan): Suitable for cleaning paint utensils, not for dumping paint.
- Waste management and dumping: Contact the Services Dept.

electricity

- Total power: 2.000 KVA.
- Location of switchboards at N. low and N. gangway
- Board colour code:
 - **BLUE**: Direct supply from external network.
 - **GREEN**: Stabilised supply through UPS (300 KVA; 30 min).
 - **BROWN**: Supply via external external generator.
- Electrical outlets:
 - Single-phase: Schuko, Cetac.
 - Three-phase: Cetac 16, 32 and 63 A, Marechal 125A and Spot lock 400A.

other services

- Compressed air: 4 ¾" and 16 ½" quick taps
- Drinking water: 2 sink taps, 2 spillway taps
- 6 smoke extractors for special effects, 882.866,67 ft³/h u.
- Hoists on beams.
 - 9 beams.
 - 3 hoists per beam.
 - Max. load beam 6.613,87 lb.
 - Max. load hoist 2.204,62 lb.
- Wooden comb: Max. load 1,42 psi. Max. point load 1.488,12 lb.



film set 4

general information

- Built-up area: 25.187,55 sq ft.
- Useful surface area: 19.310,46 sq ft.
- Free height: 49,21 ft.
- Flood pit 32,81 x 32,81 x 9,84 ft.
 - Filling time: 9 h.
 - Emptying: 3 h (by pump).

soil layers

- 1,18 in phenolic resin plywood board.
- 0,75 in water-repellent MDF board.
- 0,39 in non-slip phenolic board on both sides.
- Sand filler between 3,15 x 1,61 in wooden battens.
- Reinforced 7,87 in screed + 9,84 in of gravel.
- Maximum load: 2,84 psi.
- Maximum nailing depth: 1,97 in.

acoustics

- Airborne sound insulation: 50 dB.

climate control

- AA in sets: Electrical power 400 kw.
- Heating by means of portable fan heaters (Power: 15kw/unit). Request to SPTD Technical Dept.

dumping

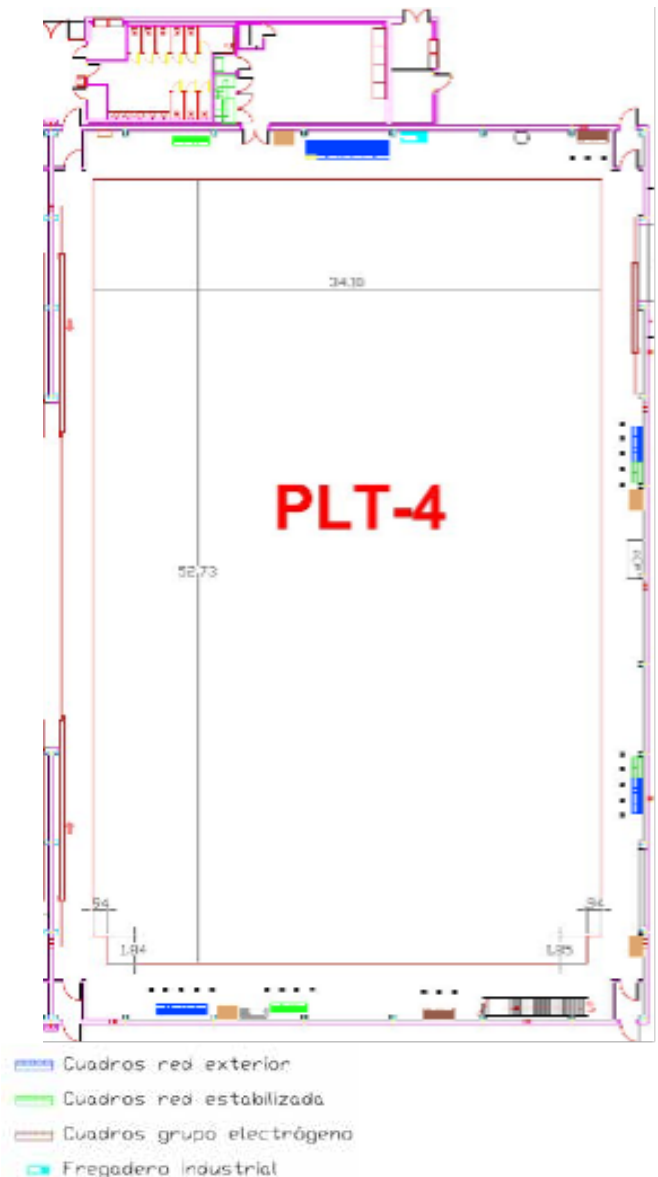
- Industrial sinks (see plan): Suitable for cleaning paint utensils, not for dumping paint.
- Waste management and dumping: Contact the Services Dept.

electricity

- Total power: 2.000 KVA.
- Location of switchboards at N. low and N. gangway
- Board colour code:
 - **BLUE**: Direct supply from external network.
 - **GREEN**: Stabilised supply through UPS (300 KVA; 30 min).
 - **BROWN**: Supply via external external generator.
- Electrical outlets:
 - Single-phase: Schuko, Cetac.
 - Three-phase: Cetac 16, 32 and 63 A, Marechal 125A and Spot lock 400A.

other services

- Compressed air: 4 ¾" and 16 ½" quick taps
- Drinking water: 2 sink taps, 2 spillway taps
- 6 smoke extractors for special effects, 882.866,67 ft³/h u.
- Hoists on beams.
 - 9 beams.
 - 3 hoists per beam.
 - Max. load beam 6.613,87 lb.
 - Max. load hoist 2.204,62 lb.
- Wooden comb: Max. load 1,42 psi. Max. point load 1.488,12 lb.



film set 5

general information

- Built-up area: 17.437,53 sq ft.
- Useful surface area: 13.594,82 sq ft.
- Free height: 41,01 ft.

soil layers

- 1,18 in phenolic resin plywood board.
- 0,75 in water-repellent MDF board.
- 0,39 in non-slip phenolic board on both sides.
- Sand filler between 3,15 x 1,61 in wooden battens.
- Reinforced 7,87 in screed + 9,84 in of gravel.
- Maximum load: 2.84 psi.
- Maximum nailing depth: 1,97 in.

acoustics

- Airborne sound insulation: 50 dB.

climate control

- AA in sets: Electrical power 400 kw.
- Heating by means of portable fan heaters (Power: 15kw/unit). Request to SPTD Technical Dept.

dumping

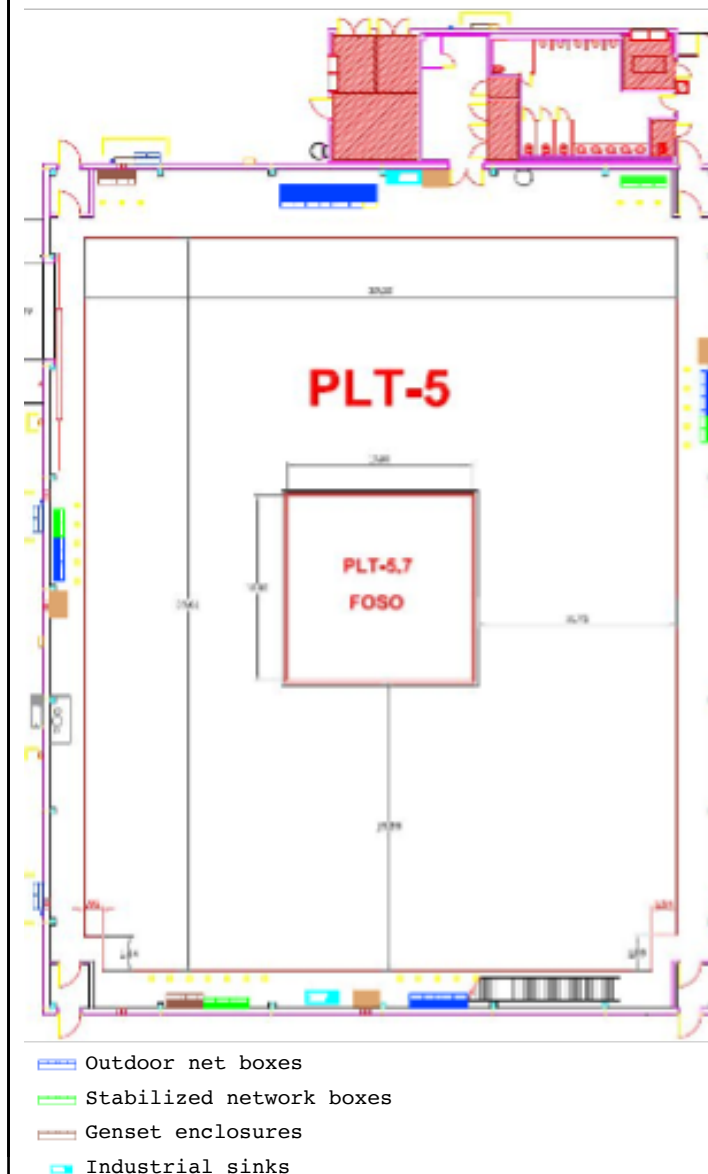
- Industrial sinks (see plan): Suitable for cleaning paint utensils, not for dumping paint.
- Waste management and dumping: Contact the Services Dept.

electricity

- Total power: 1.250 KVA.
- Location of switchboards at N. low and N. gangway
- Board colour code:
 - **BLUE**: Direct supply from external network.
 - **GREEN**: Stabilised supply through UPS (300 KVA; 30 min).
 - **BROWN**: Supply via external external generator.
- Electrical outlets:
 - Single-phase: Schuko, Cetac.
 - Three-phase: Cetac 16, 32 and 63 A, Marechal 125A and Spot lock 400A.

other services

- Compressed air: 4 ¾" and 16 ½" quick taps.
- Drinking water: 2 sink taps, 2 spillway taps.
- 4 smoke extractors for special effects, 882.866,67 ft³/h u.
- Hoists on beams.
 - 7 beams.
 - 3 hoists per beam.
 - Max. load beam 6.613,87 lb.
 - Max. load hoist 2.204,62 lb.
- Wooden comb: Max. load 1,42 psi. Max. point load 1.488,12 lb.
- Coaxial audio-visual cabling network to the support building room.
- Junction box: 5 ground level, 3 gangway level.
 - 5 LEMO connectors.
 - 20 BNC connectors.
 - 36 XLR connectors.
- On-stage patch cabinet.
- Technical room with wiring racks.



film set 6

general information

- Built-up area: 17.437,53 sq ft.
- Useful surface area: 13.594,82 sq ft.
- Free height: 41,01 ft.

soil layers

- 1,18 in phenolic resin plywood board.
- 0,75 in water-repellent MDF board.
- 0,39 in non-slip phenolic board on both sides.
- Sand filler between 3,15 x 1,61 in wooden battens.
- Reinforced 7,87 in screed + 9,84 in of gravel.
- Maximum load: 2.84 psi.
- Maximum nailing depth: 1,97 in.

acoustics

- Airborne sound insulation: 50 dB.

climate control

- AA in sets: Electrical power 400 kw.
- Heating by means of portable fan heaters (Power: 15kw/unit). Request to SPTD Technical Dept.

dumping

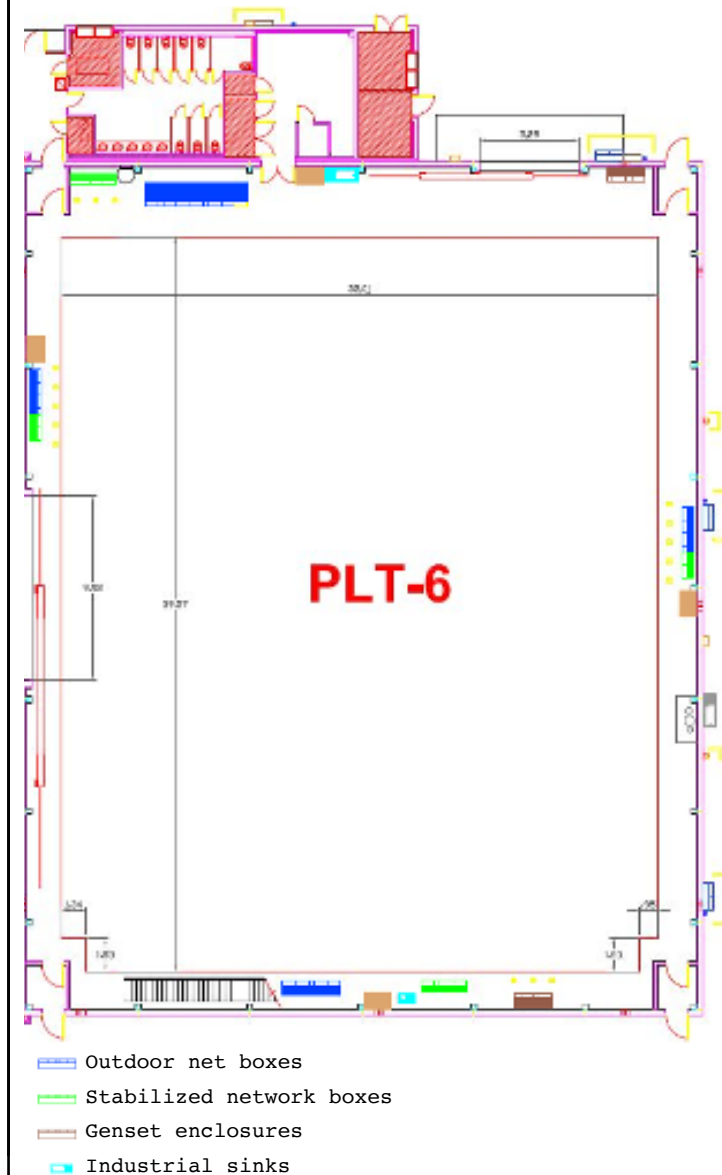
- Industrial sinks (see plan): Suitable for cleaning paint utensils, not for dumping paint.
- Waste management and dumping: Contact the Services Dept.

electricity

- Total power: 1.250 KVA.
- Location of switchboards at N. low and N. gangway
- Board colour code:
 - **BLUE**: Direct supply from external network.
 - **GREEN**: Stabilised supply through UPS (300 KVA; 30 min).
 - **BROWN**: Supply via external external generator.
- Electrical outlets:
 - Single-phase: Schuko, Cetac.
 - Three-phase: Cetac 16, 32 and 63 A, Marechal 125A and Spot lock 400A.

other services

- Compressed air: 4 ¾" and 16 ½" quick taps.
- Drinking water: 2 sink taps, 2 spillway taps.
- 4 smoke extractors for special effects, 882.866,67 ft³/h u.
- Hoists on beams.
 - 7 beams.
 - 3 hoists per beam.
 - Max. load beam 6.613,87 lb.
 - Max. load hoist 2.204,62 lb.
- Wooden comb: Max. load 1.42 psi. Max. point load 1.488,12 lb.
- Coaxial audio-visual cabling network to the support building room.
- Junction box: 5 ground level, 3 gangway level.
 - 5 LEMO connectors.
 - 20 BNC connectors.
 - 36 XLR connectors.
- On-stage patch cabinet.
- Technical room with wiring racks.



workshop/warehouse 1 (carpentry)

technical specifications

general information

- Built-up area: 19.439,62 sq ft.
- Usable workshop area (height 26,25): 13.975,11 sq ft.
 - Usable area (height 3 m): 3.527,55 m2.
 - Warehouse: 333,68 sq ft.
 - Office: 172,22 sq ft.
 - Technical rooms: 209,89 sq ft.
 - Complete double bathrooms.
 - Free height: 26,25 ft. For more height, please contact Dep. Tec. SPTD.

soil layers

- Area with wooden floor of 12.087,12 sq ft.
- Concrete floor 5.877,1 sq ft.

acoustics

- There is no isolation.

climate control

- 2 Roof Top of 104.80kW cold and 106 kw heat..

dumping

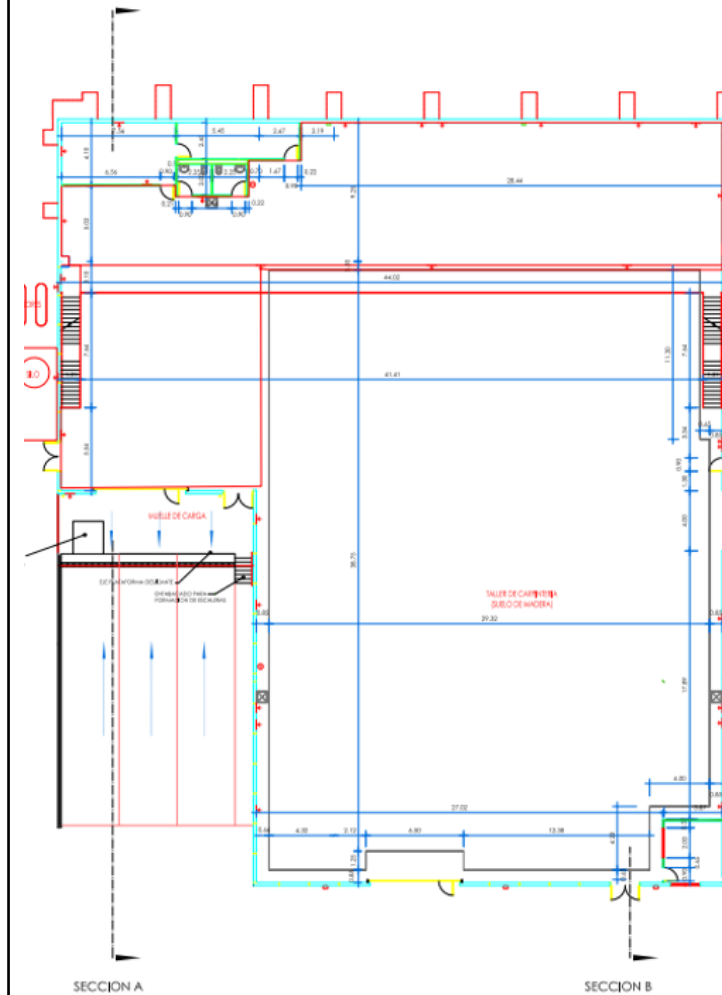
- Waste water connection in sinks.
- Rainwater drainage via 3,54 in diameter PVC pipe.
- Sawdust and shavings evacuation to external hopper by suction duct to each of the machines.

electricity

- Maximum power 210.37kw at:
- Switchgear location:
 - Technical room of the warehouse, each of the machines in the warehouse.
- 5 perimeter electrical panels with:
 - 1 Three-phase 32A cetat socket.
 - 1 Three-phase 16A cetat socket.
 - 1 Single-phase 16A cetat socket.
 - 2 16A sucko sockets.
 - 2 RJ telephone sockets and 2 RJ data sockets.

other services

- Loading dock with platform and pit with levelling ramp.
- 19,69 ft wide x 26,25 ft high lorry gate.
- Compressed air: 5 connection points with 1 ¾" and 4 16" quick connectors with a Maximum working pressure of 7 bar.
- Wi-Fi network.
- Drinking water: 2 sinks, 1 tap per sink.
- Carpentry machinery:
 - Sawdust and shavings collection hopper outside.
 - 1 vertical saw.
 - 2 band saws.
 - 2 planers.
 - 2 thicknessers.
 - 2 table saws.
 - 1 vertical drill.
 - 1 spindle moulder with carriage.



workshop/warehouse 2 (paint and plaster)

technical specifications

general information

- Built-up area: 12.238,57 sq ft.
- Usable workshop area (height 8m): 11.987,87 sq ft.
 - Office: 172,22 sq ft.
 - Painting workshop: 1.666,04 sq ft.
 - Warehouse: 2 of 107,64 sq ft.
 - Resin workshop: 573,93 sq ft.
 - Model workshop: 605,47 sq ft.
 - 2 complete bathrooms.

soil layers

- Area with wooden floor of 12.087,12 sq ft.
- Concrete floor.

acoustics

- There is no isolation.

climate control

- Roof Top of 104.80kW cold and 106 kw heat.

dumping

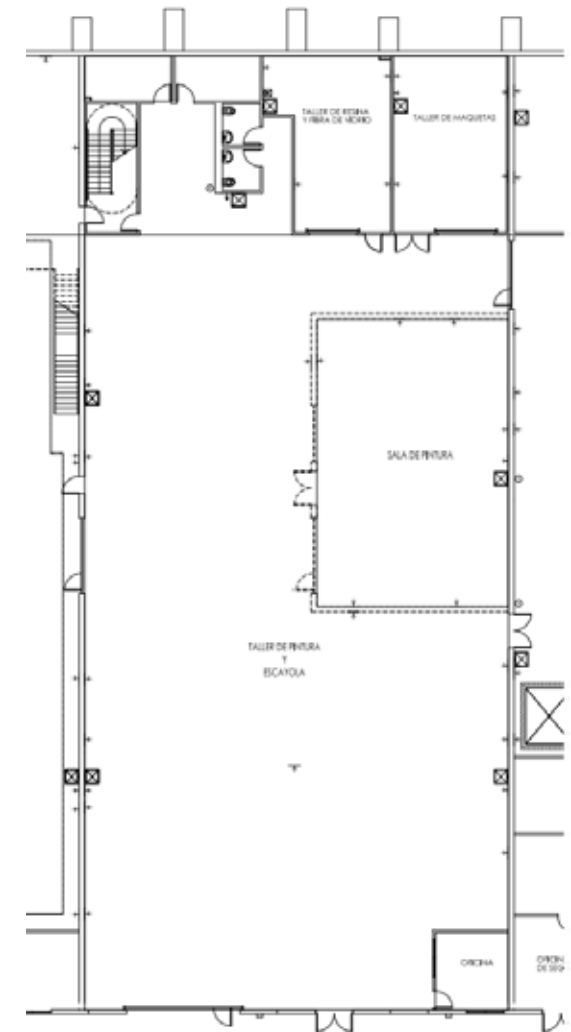
- Waste water connection in sinks:
 - 6 sinks.
- Rainwater drainage by means of a 3,54 in diameter PVC pipe.
- Gas evacuation by means of an extractor fan in the resin, model and paint workshop.

electricity

- Maximum Power 88,57KW in:
 - Power Paint: 17,72.
 - Resin Power 13,84KW.
 - Power Models 17,72KW.
 - Plaster power 39,29KW.
- 3 perimeter electrical panels with:
 - 1 Three-phase 32A cetat socket.
 - 1 Three-phase 16A cetat socket.
 - 1 Single-phase 16A cetat socket.
 - 2 16A sucko sockets.
 - 2 RJ telephone sockets and 2 RJ data sockets.

other services

- 19,69 ft wide x 26,25 ft high lorry gate.
- Compressed air: 3 connection points with 1 ¾" and 4 16" quick connectors with a Maximum working pressure of 7 bar.
- Wi-Fi network.
- Drinking water: 6 sink taps, 1 tap per sink.
- Plaster workshop machinery:
 - Vertical drill.
 - Sheet metal folding machine.
 - Band saw.
 - 2 guillotines.
 - 1 Hydraulic boom 3.306,93 lb.
- Machinery in model workshop:
 - Rubber moulding machine.
 - Ceiling extractor.
 - Particle Hoover.
- Machinery in paint shop:
 - 5 room fume extractors.
 - 1 fume extractor hood with 2 motors.
 - 2 10 bar air compressors.
- Machinery in resin workshop:
 - Ceiling extractor fan.
 - Particle Hoover.



workshop/warehouse 3 (special effects)

technical specifications

general information

- Built-up area: 14.811,14 sq ft.
- Usable workshop area, height 8m: 10.720,9 sq ft.
 - DPC (internal security and telecommunications tasks CDLL): 941,19 sq ft.
- Warehouse 1: 1302,43 sq ft.
- Warehouse 2: 1280,91 sq ft with:
 - Technical rooms: 2 of 118,4 sq ft.
- 2 complete bathrooms.

soil layers

- Concrete floor.

acoustics

- There is no isolation.

climate control

- Roof Top of 86 kW cold and 89,4 kw heat.

dumping

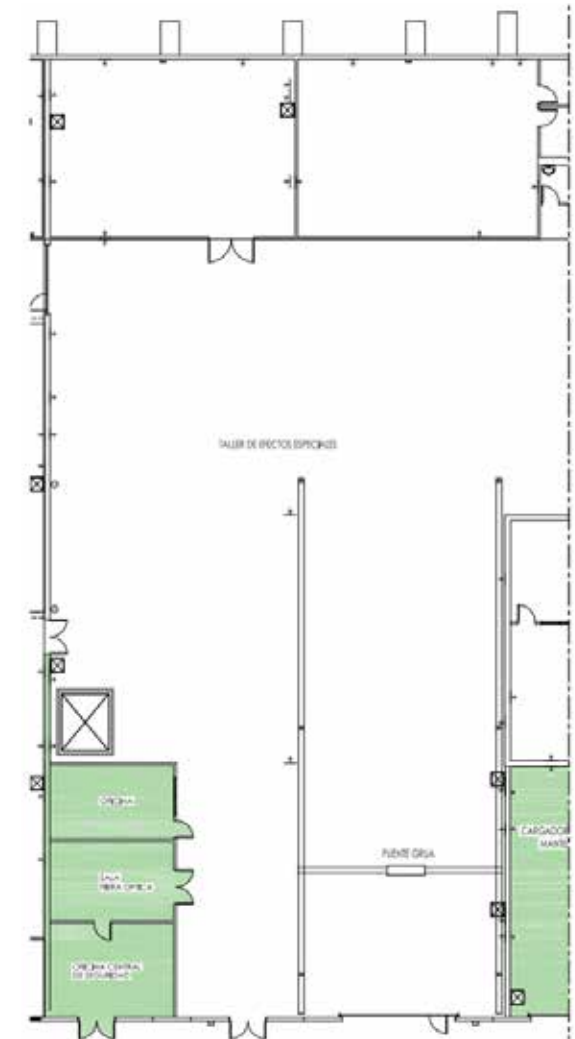
- Waste water connection in sinks:
 - 2 sinks.
- Rainwater drainage by means of 3,54 in diameter PVC pipe.

electricity

- Maximum power 210.37kw at:
- Switchgear location:
 - Technical room of the warehouse, each of the machines in the warehouse.
- 5 perimeter electrical panels with:
 - 1 Three-phase 32A cetat outlet.
 - 1 Three-phase 16A cetat outlet.
 - 1 Single-phase 16A cetat outlet.
 - 2 16A sucko sockets.
 - 2 RJ telephone sockets and 2 RJ data sockets.

other services

- 19,69 ft wide x 26,25 ft high lorry gate.
- Compressed air: 5 connection points with 1 ¾" and 4 16" quick connectors with a Maximum working pressure of 7 bar.
- Wi-Fi network .
- Drinking water: 3 sink taps, 1 tap per sink.
- 22.046,23 lb overhead crane.



workshop/warehouse 6 (changing room)

technical specifications

general information

- Built-up area: 10.032 sq ft.
- Usable warehouse area (height 26,25): 7.384,04 sq ft.
 - Maintenance workshop (internal CDLL maintenance tasks) 4.975,29467 sq ft.
 - Warehouse 1: 1.036,67 sq ft.
 - Warehouse 2: 1.160,46 sq ft.
 - Office: 337,13 sq ft.

soil layers

- Concrete floor.

acoustics

- There is no isolation.

climate control

- UTA cold 50,20KW and heat 53,60KW .

dumping

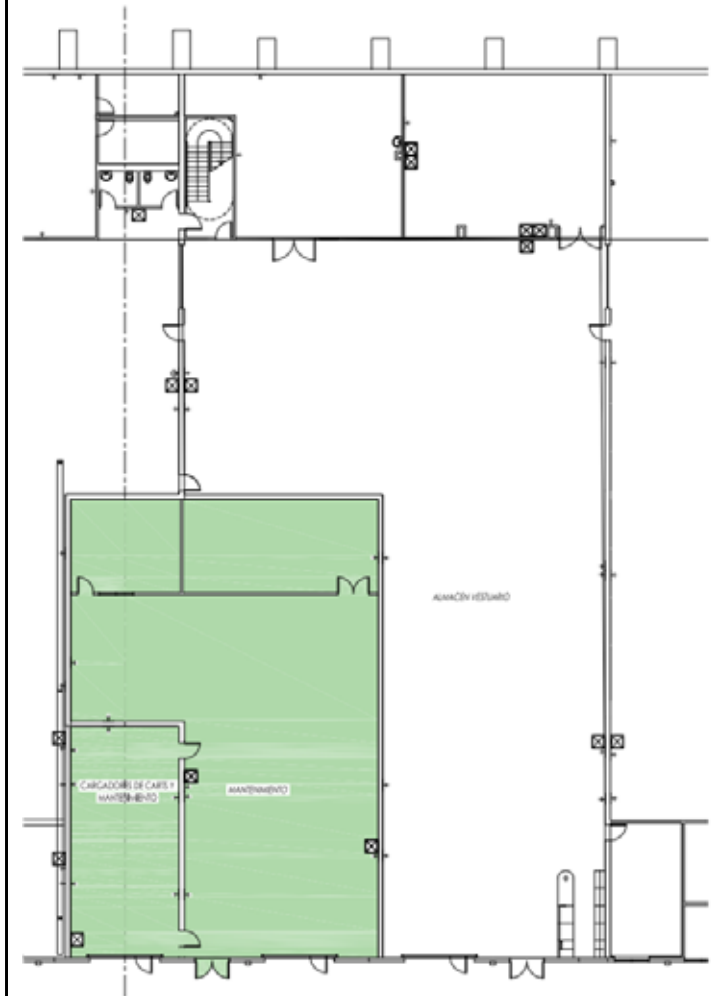
- Waste water connection in sinks:
 - 3 sinks.
- Rainwater drainage by means of 3,54 in diameter PVC pipe.

electricity

- Maximum power 199,30 kW.
- Location of switchboards:
- Technical room of the warehouse, each of the warehouse machines.
- 2 perimeter electrical panels with:
 - 1 Three-phase 32A cetat socket.
 - 1 Three-phase 16A cetat socket.
 - 1 Single-phase 16A cetat outlet.
 - 2 16A sucko sockets .
 - 2 RJ telephone sockets and 2 RJ data sockets.
- 1 charger panel of 69,2 kw.
 - 2 cetat 32 5 POLES.
 - 2 cetat 16 5 POLES.
 - 2 cetat 16 2 POLES.

other services

- 19,69 ft wide x 26,25 ft high lorry gate.
- Compressed air: 3 connection points with 1 ¾" and 4 16" quick connectors with a Maximum working pressure of 7 bar.
- Wi-Fi network.
- Drinking water: 3 sink taps, 1 tap per sink.
- 2 storage cages. Closed with simple twist mesh with sliding door.
- 1 cage with industrial shelving for pallets, Mecalux 4.409,25 lb. With 6 sections of 5,91 ft length and 8 sections of 8,86 ft at 3 heights, leaving space for a forklift truck.



workshop/warehouse 7 (props)

technical specifications

general information

- Built-up area: 11.592,73 sq ft.
- Usable warehouse area (height 8 m): 10.751,42 sq ft.
 - Maintenance workshop (internal CDLL maintenance tasks): 4.975,29 sq ft.
 - Office 1: 191,06 sq ft.
 - Office 2: 122,28 sq ft.
 - Technical Room 1: 159,84 sq ft.
 - Technical Room 2: 165,33 sq ft.
 - 2 complete bathrooms.
 - 1 shower room with changing room.
 - Garden cage (Internal works of CDLL): 1151,74 sq ft.

soil layers

- Concrete floor.

acoustics

- There is no isolation.

climate control

- There is no air conditioning.

dumping

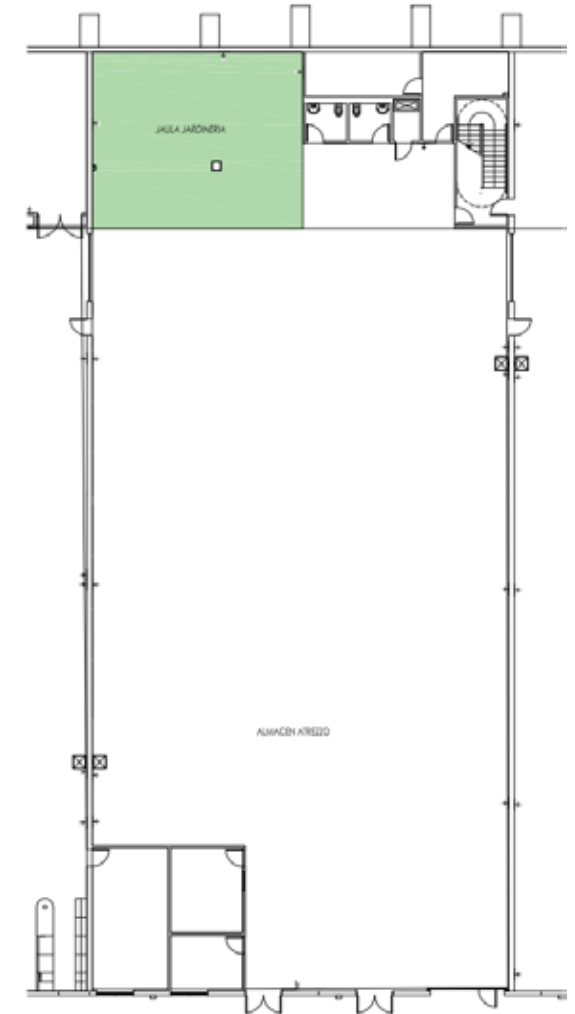
- Waste water connection in sinks:
 - 2 sinks.
- Rainwater drainage by means of 90 mm diameter PVC pipe.

electricity

- Maximum power 88,58 kw
- Location of switchboards:
- Technical room of the warehouse, each of the warehouse machines.
- 2 perimeter electrical panels with:
 - 1 Three-phase 32A cetat socket.
 - 1 Three-phase 16A cetat socket.
 - 1 Single-phase 16A cetat outlet.
 - 2 16A sucko sockets.
 - 2 RJ telephone sockets and 2 RJ data sockets.

other services

- Truck gate 19,69 ft wide x 26,25 ft high.
- Compressed air: 3 connection points with 1 ¾" and 4 16" quick connectors with a Maximum working pressure of 7 bar.
- Wi-Fi network.
- Drinking water: 2 sink taps, 1 tap per sink.
- 2 storage cages. Closed with simple twist mesh with sliding door.
- 2 cages with industrial pallet racking, Mecalux 4.409,25 lb. With 6 sections, with 1 section of 5,91 in length and 2 sections of 8,86 ft at 3 heights, leaving space for a forklift truck.



workshop/warehouse 8 (lighting)

technical specifications

general information

- Built-up area: 20.333,03 sq ft.
- Usable workshop area (height 26,25 ft): 15.715,31 sq ft
- Usable area height (9,84 ft): 15.873,11 sq ft.
- Warehouse: 15.794,32 sq ft.
- Photography laboratory: 3.035,42 sq ft.
- Office: 256,18 sq ft.
- Free height: 26,25. For more height, contact Dep. Tech. SPTD.

soil layers

- Concrete floor.

acoustics

- There is no isolation.

climate control

- 2 Roof Top of 104.80kW cold and 106 kw heat.

dumping

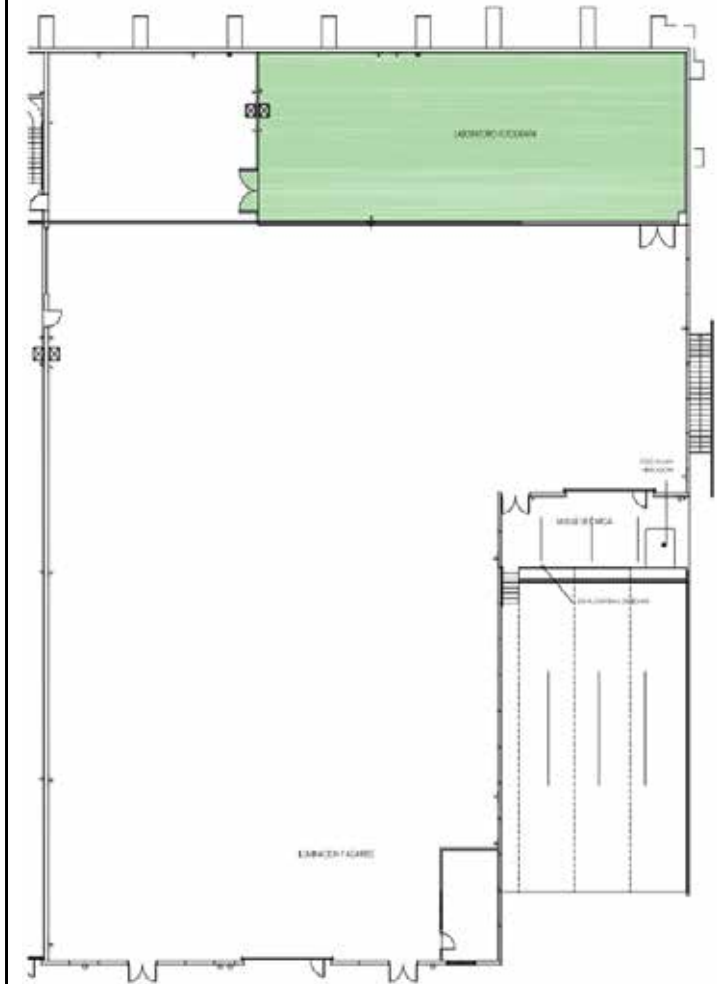
- Wastewater connection in floor gratings, 3 units.
- Rainwater drainage by means of 3,54 in diameter PVC pipe.

electricity

- Maximum power 636,65Kw in
- Location of switchboards:
- Electrical panel 1: 88,58 Kw.
- Electrical panel 2: 348,77 Kw.
 - 400 Kw cam lot socket
- Electrical panel 3: 199,30 Kw
 - 3 socket cetat 3p+T 63A.
 - 3 socket cetat 2p+T 32A.
 - 3 sockets 2p+T 16A.
 - 3 sockets sucko 16A.
 - 400KW cam lot socket.
- 4 perimeter electrical panels with:
 - 1 socket cetat Three-phase 32A.
 - 1 socket cetat Three-phase 16A.
 - 1 Single-phase 16A cetat socket.
 - 2 16A sucko sockets.
 - 2 RJ telephone sockets and 2 RJ data sockets.

other services

- Loading dock with platform and pit with levelling ramp.
- Truck gate 19,69 ft wide x 26,25 ft high.
- Compressed air: 5 connection points with 1 3/4" and 4 16" quick connectors with a Maximum working pressure of 7 bar.
- Wi-Fi network.
- Drinking water: 2 sinks, 1 tap per sink.



general information

- Total surface area: 18.438,58 sq ft.
- Art department area, toilets and shop: 4.402,44 sq ft.
- Kitchen area, chambers and lounge: 5.112,86 sq ft.
- Office, storage and infirmary area: 5.586,47 sq ft.
- Post-production, dubbing and digital editing lab area: 3.078,48 sq ft.
- Outdoor car park.
- Stairs and access doors to the lower part of the warehouses.

functional distribution

- On the same floor we have:
 - Art Department.
 - Shop.
 - Office and catering room.
 - Warehouse for perishable goods.
 - Post-production and editing rooms
 - Toilets and showers.

climate control

- Air conditioning and heating.

electricity

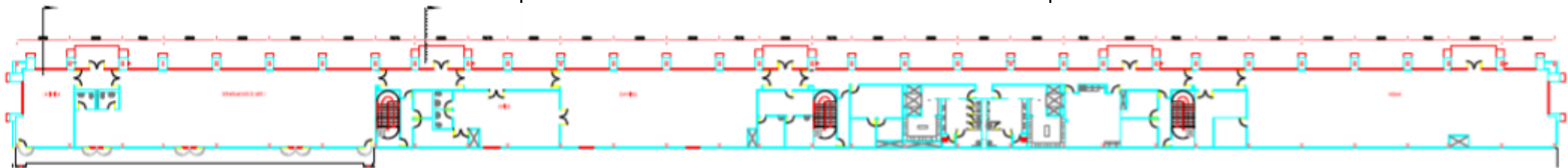
- Maximum installed power = Maximum power supplied by the Transformer Substation from which the building is fed = $2 \times 2.000 \text{ kVA} = 3.200 \text{ kW}$.

soil layers

- Carpeting with wooden skirting board (on terrazzo).
- Compact stoneware flooring.
- Anti-static vinyl flooring with wooden skirting board (on terrazzo).
- Marble.
- Compact stoneware.
- Gresite 0,79 x 0,79 in.

other services

- Fibre optic connection between mezzanine and DPC.
- Wired network and Wi-Fi throughout the building, as well as IP telephony access.
- Kitchen area, cameras and catering area.



attic (kitchen)

technical specifications

general information

- Built-up area: 4.894,35 ft sq.

soil layers

- Concrete kitchen and workshop with epoxy paint.
- Warehouse with vinyl flooring.
- Corridors and common areas in yellow macael marble.

acoustics

- There is no isolation.

electricity

- Maximum installed power = Maximum power supplied by the Transformer Substation from which the building is fed = $2 \times 2.000 \text{ kVA} = 3.200 \text{ kW}$.

dumping

- 5 sinks and 2 washbasins.
- 3 Smoke extraction hoods.
- Rainwater drainage by means of 3,54 in diameter PVC pipe.

climate control

- 1 Climaveneta 79kW chiller, hot and cold.

other services

- Kitchen equipment:
 - 2 Cold table.
 - Hot table.
 - 3 Ovens, 2 of 21,5Kw and 1 of 43Kw.
 - 3 Cookers, 2 with 6 burners and 1 with 4 burners (gas).
 - 2 griddles 2 and 1 double griddle.
 - 2 kettles.
 - 1 Fryer (gas).
 - 1 Blender.
- Cleaning equipment:
 - Washing line
 - 2 sinks of 6,56 ft, 2 sinks of 9,84 ft, 1 sink 2 sinks and 2 wash basins.
- Maintenance equipment:
 - 2 cold ovens.
 - 3 storage chambers.
 - 1 freezing chamber.
 - 2 4-door refrigerated cupboards.
- Bakery equipment:
 - 2 Ovens.
 - 1 Sheeter.
 - 1 Kneading machine.
- Furniture:
 - 6 Neutral block unit.
 - 3 Stainless steel wall table.
 - 21 Aluminium and propylene shelves .
 - 3 INOX 6,56 ft benches.
 - 3 INOX tables.

